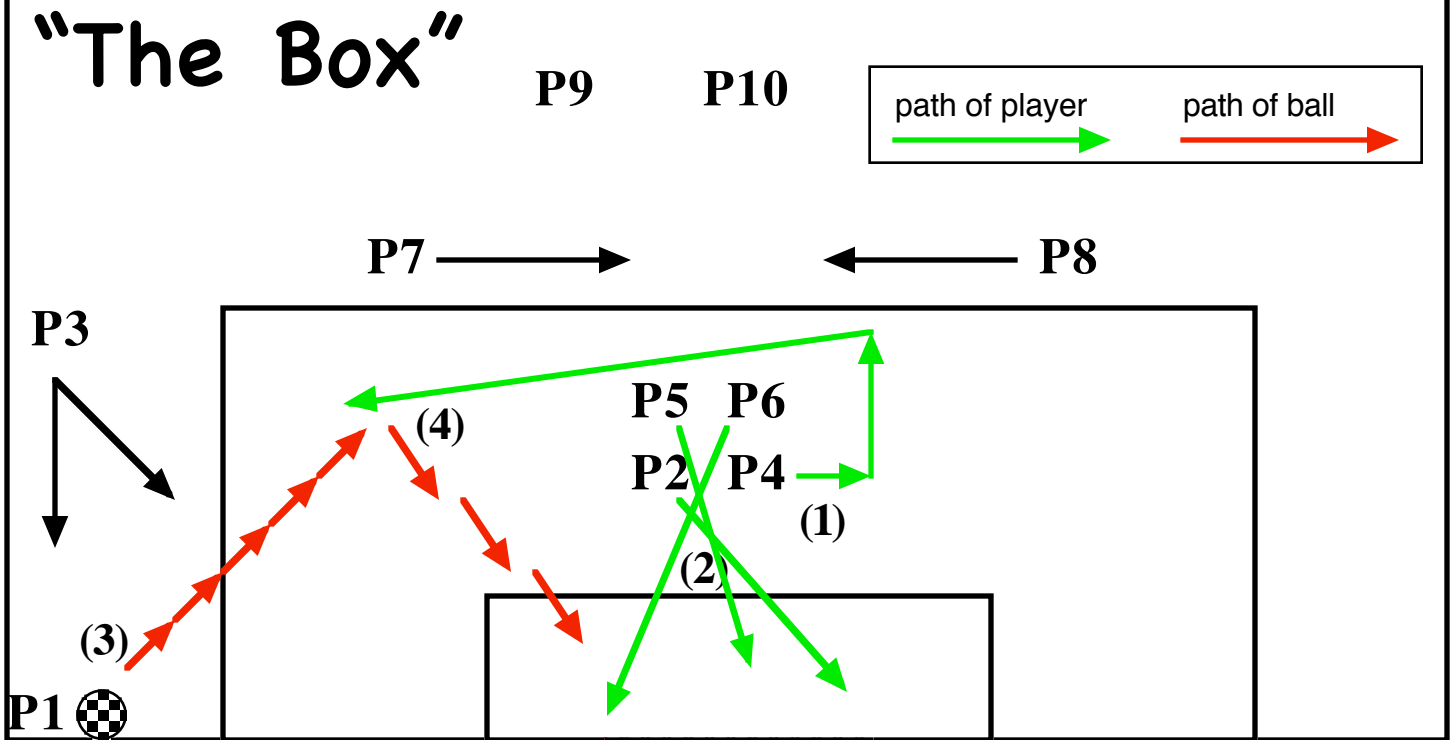


CORNER KICK PLAY



SETUP:

Players 2, 4, 5, 6 form a box by the penalty mark while Player 1 takes the corner kick

Player 3 lines up even with the 18-yard box, close to the sideline

Players 7 & 8 are at top of box and look for drop-pass; Players 9 & 10 remain back

THE PLAY

(1) Player 4 (P4) loops back and around the "box" and diagonally toward the corner

(2) Player 6 (P6) makes diagonal near post run

Player 5 (P5) makes diagonal middle goal run

Player 2 (P2) makes diagonal back post run

(3) Player 1 (P1) kicks ball to P4

(4) P4 shoots on goal

OTHER OPTIONS

> if P4 is marked closely, P1 can kick ball to P3 for a shot on goal

> if P4 doesn't have a good look at the goal or can't shoot, she can lay ball off to P3 or kick it back to P1

TRANSITION

> if P3 is not involved in the play, she should slide across the top of the box